

Human HVEM/TNFRSF14 Protein

Cat. No. HVE-HM111

Description

Source	Recombinant Human HVEM/TNFRSF14 Protein is expressed from HEK293 with His tag at the C-Terminus It contains Leu39-Val202.
Accession	Q92956-1
Molecular Weight	The protein has a predicted MW of 18.5 kDa. Due to glycosylation, the protein migrates to 32-48 kDa based on Bis-Tris PAGE result.
Endotoxin	Less than 1 EU per μg by the LAL method.
Purity	>95% as determined by Bis-Tris PAGE; >95% as determined by HPLC

Formulation and Storage

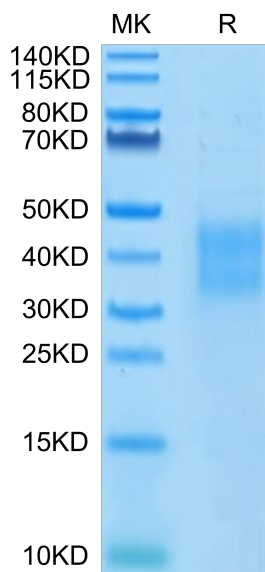
Formulation	Lyophilized from 0.22 μm filtered solution in PBS (pH 7.4). Normally 8% trehalose is added as protectant before lyophilization.
Reconstitution	Centrifuge the tube before opening. Reconstituting to a concentration more than 100 $\mu\text{g}/\text{ml}$ is recommended. Dissolve the lyophilized protein in distilled water.
Storage	-20 to -80°C for 12 months as supplied from date of receipt. -80°C for 3 months after reconstitution. Recommend to aliquot the protein into smaller quantities for optimal storage. Please minimize freeze-thaw cycles.

Background

Herpesvirus entry mediator (HVEM), also known as tumor necrosis factor receptor superfamily member 14 (TNFRSF14), is a human cell surface receptor of the TNF-receptor superfamily. Two TNF superfamily ligands lymphotoxin α (TNF- β) and LIGHT (TNFSF14) are identified as cellular ligands for HVEM and initiate the positive signaling.

Assay Data

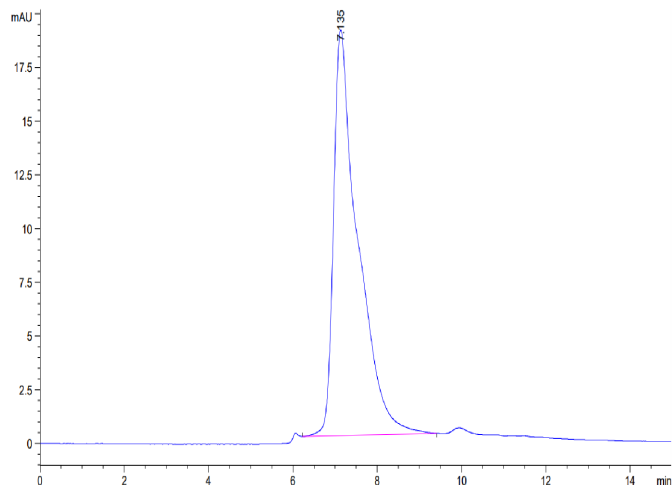
Bis-Tris PAGE



Human HVEM on Bis-Tris PAGE under reduced condition. The purity is greater than 95%.

SEC-HPLC

Assay Data

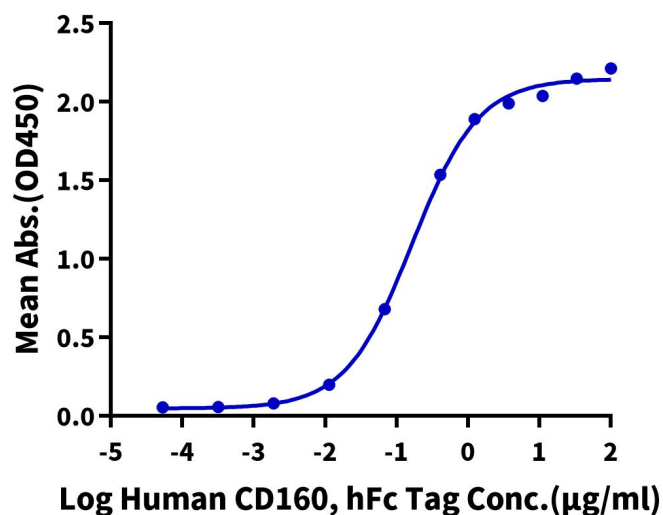


The purity of Human HVEM is greater than 95% as determined by SEC-HPLC.

ELISA Data

Human HVEM, His Tag ELISA

0.2µg Human HVEM, His Tag Per Well

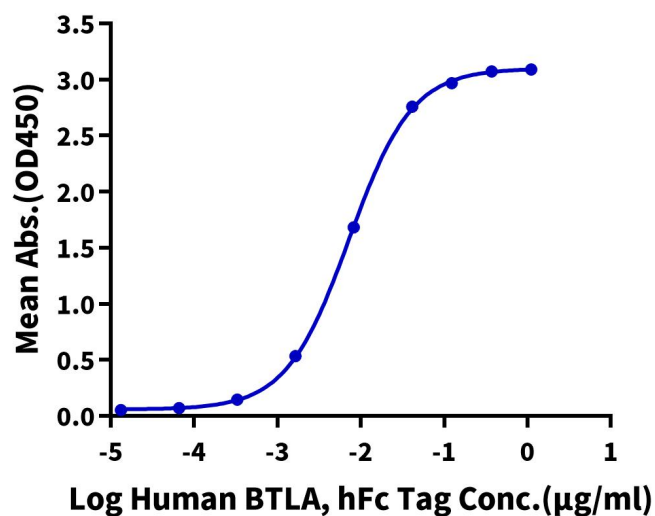


Immobilized Human HVEM, His Tag at 2 µg/ml (100 µl/Well) on the plate. Dose response curve for Human CD160, hFc Tag with the EC50 of 0.17 µg/ml determined by ELISA (QC Test).

Assay Data

Human HVEM, His Tag ELISA

0.2 µg Human HVEM, His Tag Per Well

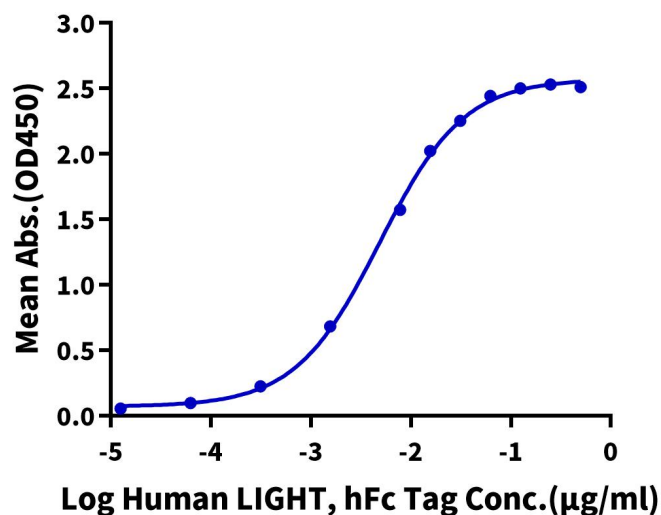


Immobilized Human HVEM, His Tag at 2 µg/ml (100 µl/Well) on the plate. Dose response curve for Human BTLA, hFc Tag with the EC50 of 7.2 ng/ml determined by ELISA.

ELISA Data

Human HVEM, His Tag ELISA

0.1 µg Human HVEM, His Tag Per Well



Immobilized Human HVEM, His Tag at 1 µg/ml (100 µl/Well) on the plate. Dose response curve for Human LIGHT, hFc Tag with the EC50 of 4.9 ng/ml determined by ELISA.